

USER'S GUIDE

CLIMASTAR®



SLIM 250W-500W-800W

INDEX

1. INTRODUCTION	2
2. WALL SUPPORT	4
2.1 SLIM 250 W - 500 W	5
2.2 SLIM 800 W	7
3. STARTING AND SETTING UP	7
3.1 DISPLAY.....	8
3.2 REGULATION WITHOUT CONTROLLING EXTERNAL TEMPERATURE	8
3.3 REGULATION CONTROLLING EXTERNAL TEMPERATURE	8
3.4 TIMER MODE	9
4. TECHNICAL CHARACTERISTICS	10
5. FAQs	10
6. GUARANTEE	11

1. INTRODUCTION

- Please, read carefully this user's guide before installing your device.
- Make sure the supply voltage corresponds with that on the nameplate (located on the left side of the device).
- The Schuko plug must be connected to a compatible Schuko socket.
- Do not place the device right under an electrical outlet.
- If the supply cord is damaged, it must be replaced by the manufacturer, its after sales service or any other qualified person.

- Not intended for children under the age of 3 unless duly supervised.
- Children over 3 and below the age of 8 must only turn on/off the device whenever it has been duly placed or installed, has been given supervision or instructions concerning use of the appliance. Children from 3 to 8 must not plug, regulate and clean the device, nor carry out any maintenance activity.
- Not intended for use by persons (including children over 8) with reduced, physical, sensory or mental capabilities, or lack of experience and knowledge, unless they have been given supervision or instruction concerning use of the appliance by a person responsible for their safety. Children must not play with the device. Cleaning and maintenance must not be carried out by children without prior supervision.

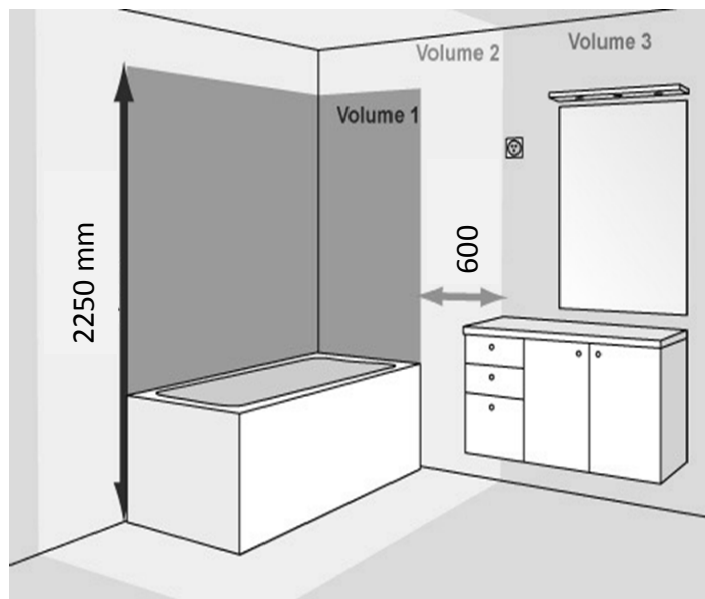
WARNING: some parts of this device may overheat and cause burns. Pay special attention when children and vulnerable people are around.

The device can be washed with a moistened cloth or with any washing conventional product.

2. WALL SUPPORT

- The device includes a mounting kit with the required hardware (plugs, screws and Allen key).
- The plugs supplied with the mounting kit cannot be used on dry walls. For this type of wall, special plugs must be used.
- When installing the device on the wall, do not hang it on volume 1 or volume 2 if the device can be manipulated from the shower or bath.

SLIM			
POWER	250 W	500 W	800 W
Height (mm)	500	1000	1000
Width (mm)	250	250	500
Depth (mm)	40	40	40

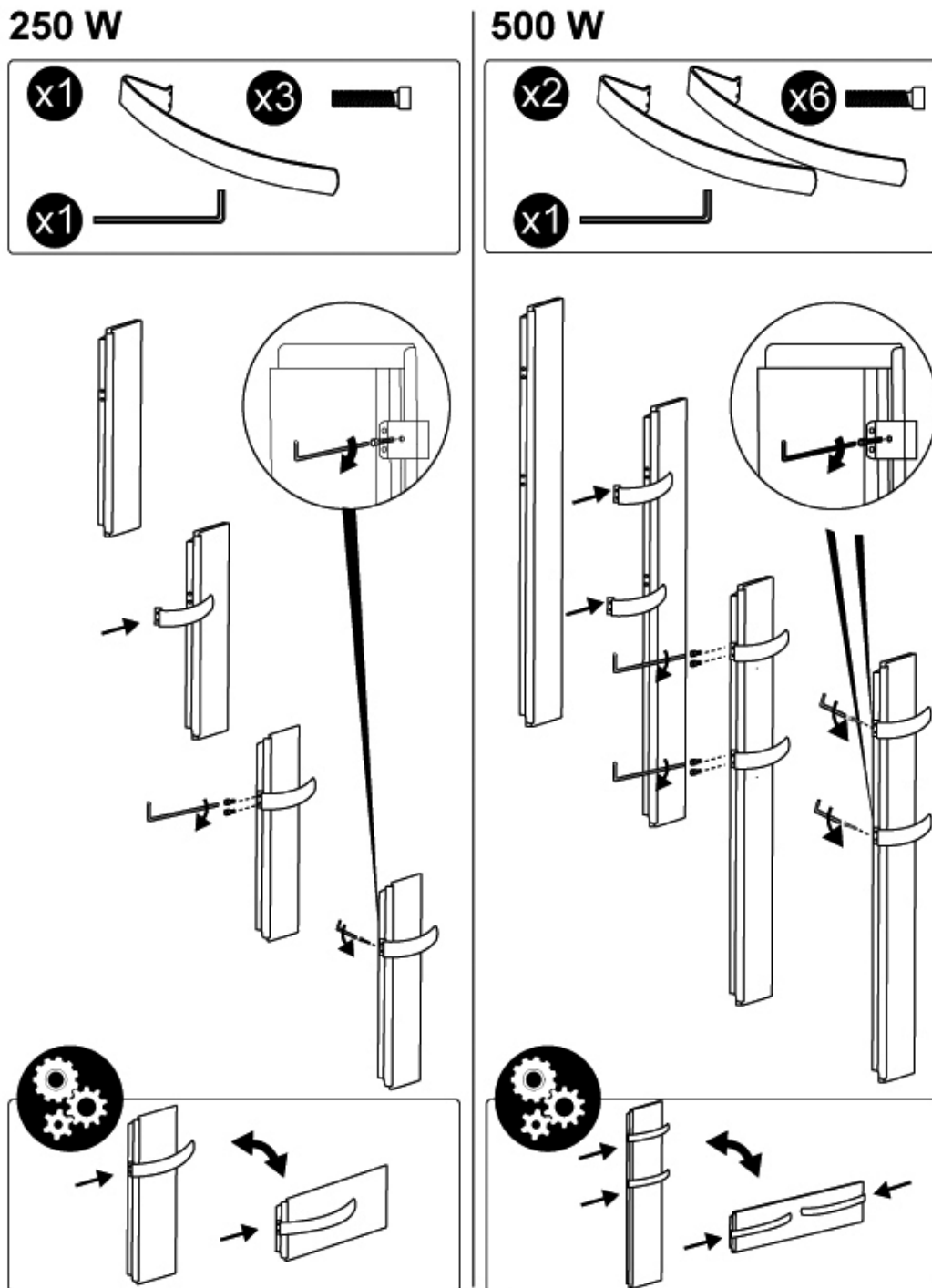


* The devices, 250W and 500W, are reversible; they can be installed both vertically and horizontally

Once decided where to install the device, remove the packaging and extract the device and its mounting kit.

2.1 SLIM 250 W - 500 W

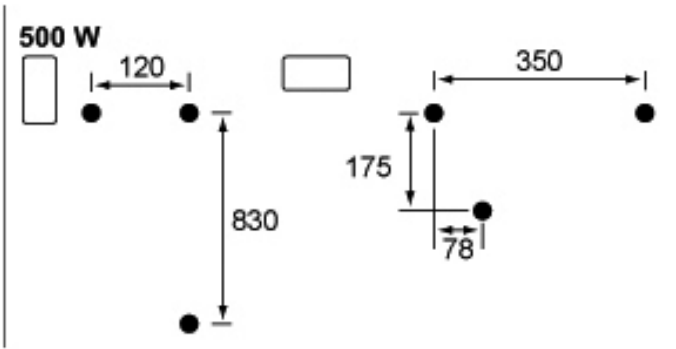
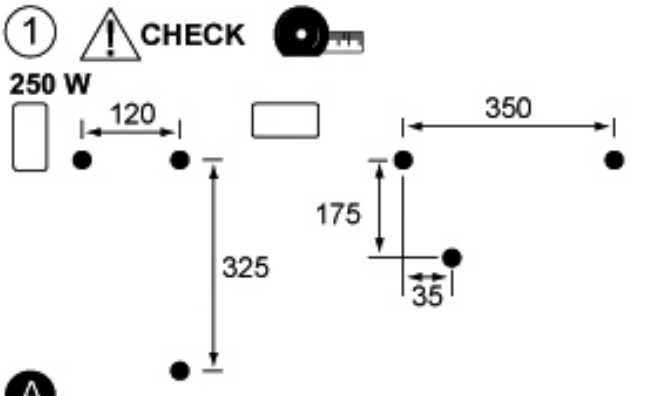
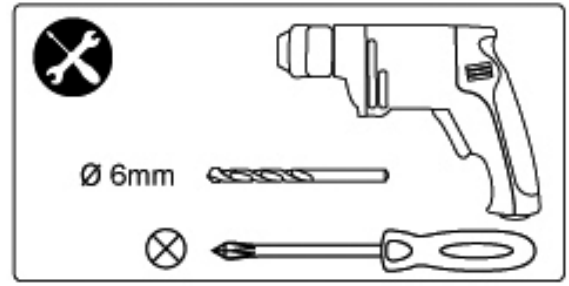
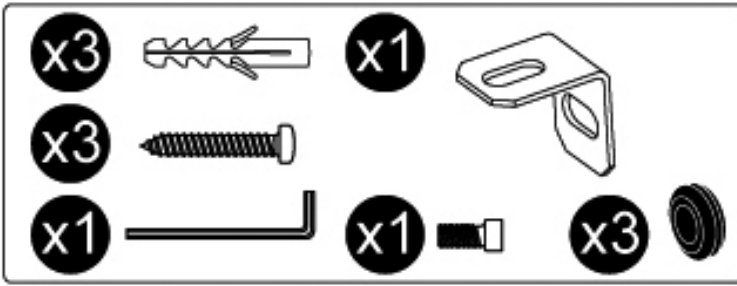
How to fix the bars



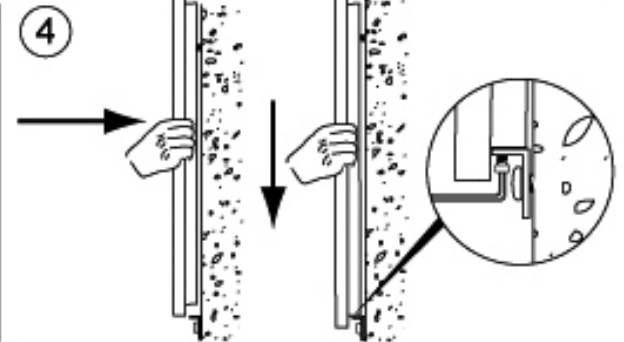
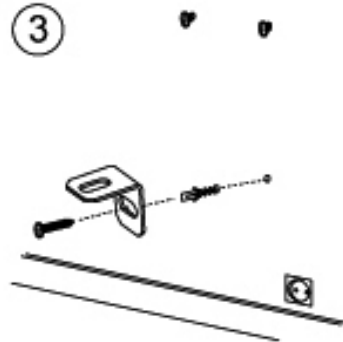
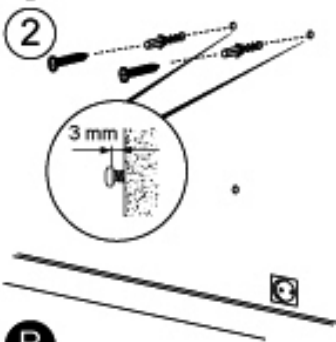
Reversible, it can be installed both vertically and horizontally

Fix the radiator as indicated below:

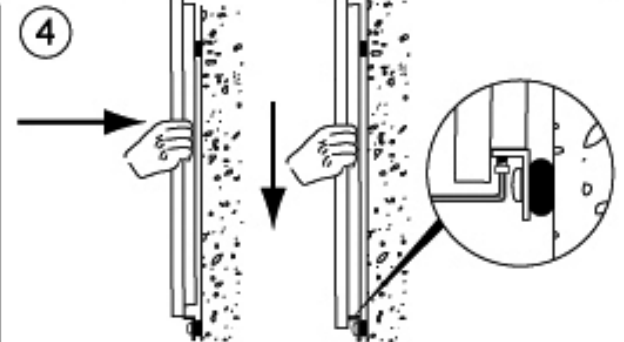
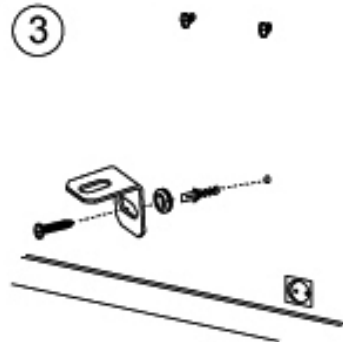
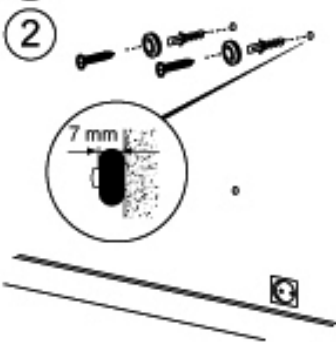
- Option A: Wall distance 3mm.
- Option B: Wall distance 7mm.



A



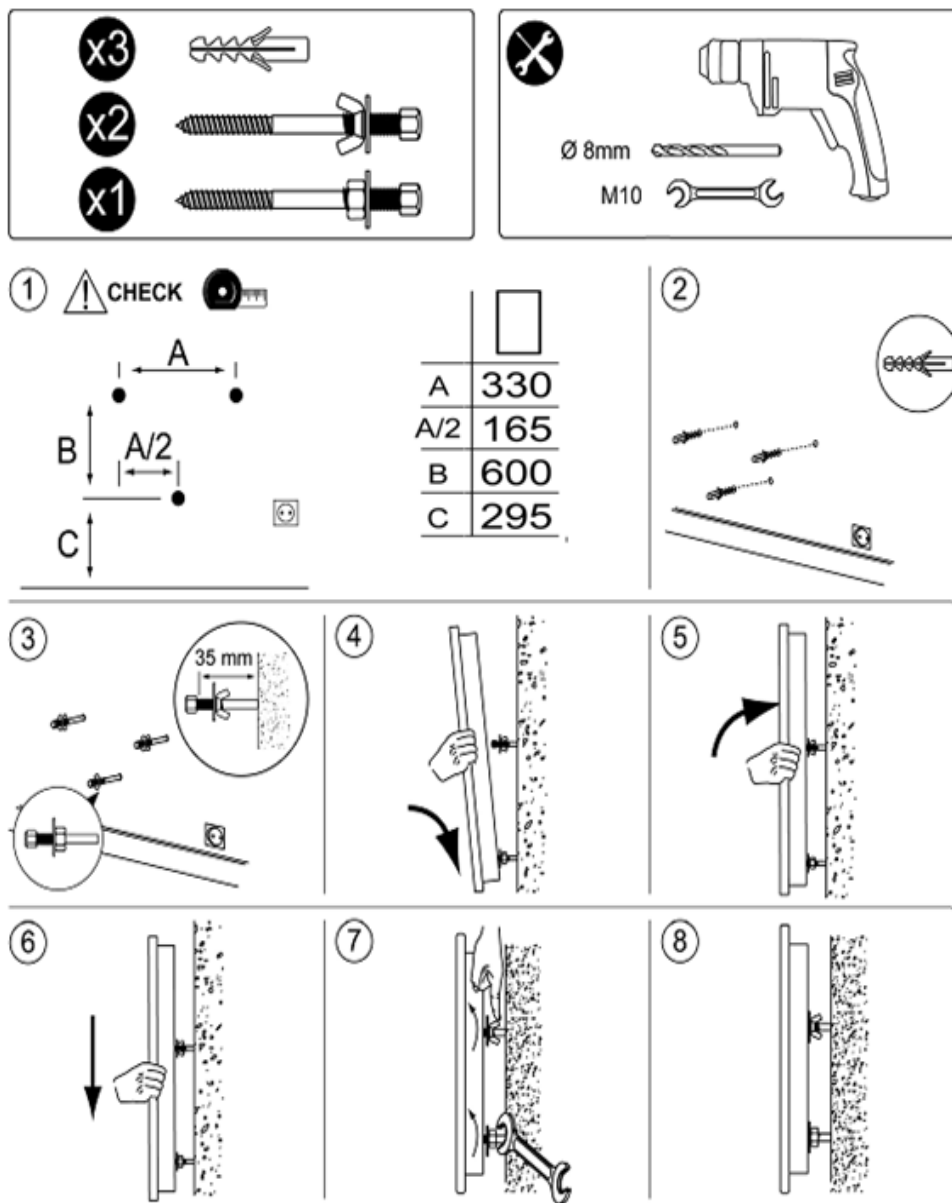
B



△ Check measures and levelling before drilling. Measures in mm

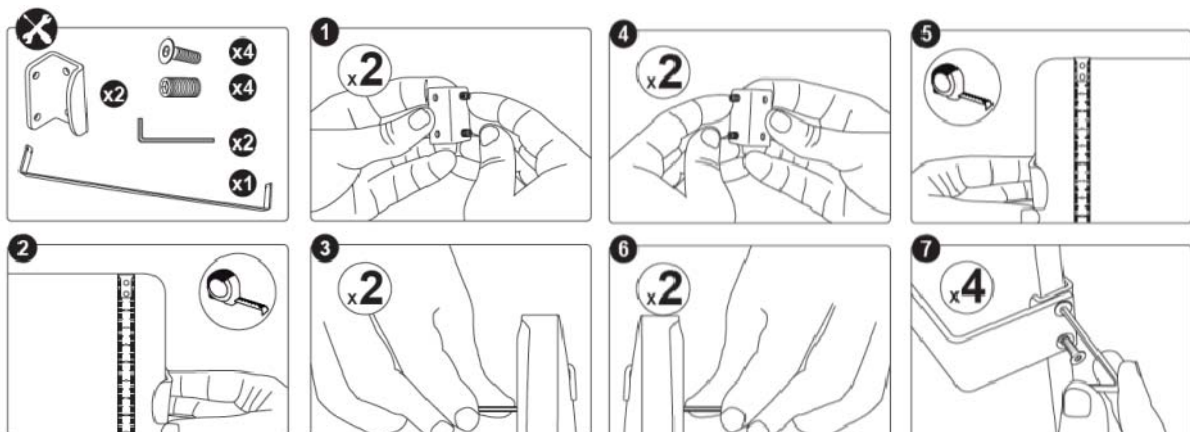
2.2 SLIM 800 W

How to install the device



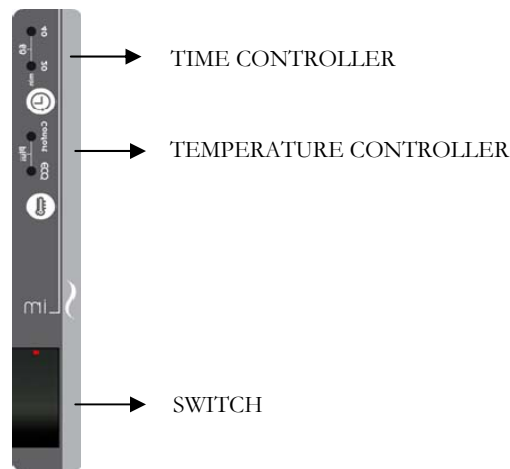
⚠ Check measures and levelling before drilling. Measures in mm

How to fix the bars



3. STARTING AND SETTING UP

3.1 DISPLAY



The device can heat without controlling the external temperature or controlling the external temperature.

3.2 REGULATION WITHOUT CONTROLLING EXTERNAL TEMPERATURE

The device heats continuously regardless the temperature of the room.

To turn on the device, plug in the power cord to a mains power outlet, and click the switch on the side. The switch led flashes, the device is working.



The device starts heating in the continuous mode.

To switch off the device, disconnect the switch, the switch led turns off.

3.3 REGULATION CONTROLLING EXTERNAL TEMPERATURE

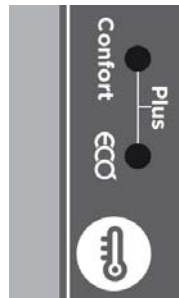
The user can set the room temperature.

To turn on the device, plug in the power cord to a mains power outlet, and click the switch on the side. The switch led flashes, the device is working.



The device starts heating in the continuous mode.

To select the room temperature, press the temperature button.





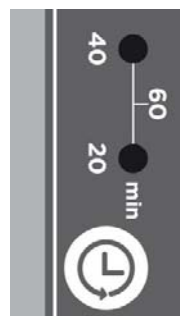
- Eco light on: 19 °C
- Confort light on: 21 °C
- Both lights on (Plus): 23 °C

By pressing the temperature button for 2 seconds, all the lights turn off and the device keeps on working continuously, with no external temperature regulation.


3.4 TIMER MODE

The device will work as long as the user sets up the time.

Press  to select the operating time. By pressing  repeatedly, operating working minutes are selected.



Once programmed time has elapsed, the device stops heating.
Eg. Deactivates in 60 minutes.

To deactivate the timer function, press  until all lights are off.

4. TECHNICAL CHARACTERISTICS

MEASURES & WEIGHT	
Description:	SLIM 250 W
Measures:	250 x 500 x 40 (mm) Reversible
Weight:	5,5 Kg.
Description:	SLIM 500 W Reversible
Measures:	250 x 1000 x 40 (mm) Reversible
Weight:	11 Kg.
Description:	SLIM 800 W
Measures:	500 x 1000 x 40 (mm)
Weight:	18 Kg.
TECHNICAL CHARACTERISTICS	
Voltage	230 V
Frequency:	50 Hz
Plug:	Unipolar 10-15 A/250 VAC
Safety Thermostat:	Automatic - Cut-off T ^a 90 ± 0,5° - Reset T ^a 65° ± 10°
Type of Protection:	Class II IP 24
MATERIALS	
Back Frame	High-quality Steel
Front	DUAL KHERR

5. FAQs

PROBLEM	PROBABLE CAUSE	SOLUTION
The device does not heat up	Timer mode is activated and light is on	Switch off the main switch and connect it again.
The radiator does not operate	Timer mode is activated	Switch off the main switch and connect it again.
	Control panel switch and protection down	Check that the automatic control is not down. Make sure the installation is correct and that there are independent lines for the heating system with a 2.5 mm ² cable gauge and a maximum power of 3500 w.
	Switch is off	Set the switch in position I.
Blocked buttons	No response from operating buttons	Press to unpin

6. GUARANTEE

CLIMASTAR guarantees that in the moment of its purchase the product is free of any defect in the materials and in the work force (limited guarantee). CLIMASTAR offers a commercial and voluntary guarantee; conditions included are similar to those of the legal guarantee, being CLIMASTAR responsible for the non-conformities arisen in the terms and conditions mentioned below. Moreover, CLIMASTAR offers a total warranty of 2 years in the spare parts.

- CLIMASTAR is responsible for the non-conformities arisen within the 6 months following the date of sale. If the non-conformity arises after those 6 months, the user shall prove that the non-conformity already existed when delivered. The user must inform CLIMASTAR of said non-conformity in a period inferior to two months.
- To obtain the service under the terms of this warranty it is important to detail the device's purchasing date because the warranty period starts with the purchase invoice of the system customer. However, in no case this warranty will be liable for defects that may arise after thirty-six months from the manufacture date.
- This warranty is strictly limited to the repairing in the factory of the manufacturing defect part or parts of the device, or to the complete replacement of the system when, in the opinion of the manufacturer, it is not possible or is uneconomical. This does not include any other type of expenditure as an installation, assembly, disassembly or transport.
- This warranty does not cover defects and / or malfunction caused by accidents, misuse, negligence, wears, breakage, an incorrect installation and poor electricity supply to the system. This warranty is also excluded if it is used with another purpose other than heating, for an alteration, modification, tampering or unauthorized repairing of the product, and by other different causes beyond the manufacturer's reach after the delivery of the product.
- The warranty does not cover the costs and expenses incurred to access the device or installation, such as in hidden locations, heights, non-practicable ceilings.. Neither does it include the costs derived from removing or replacing any structural element to access the device or the installation.
- No heating system will be returned to CLIMASTAR without a previous codified and official MERCHANDISE RETURN AUTHORITY. CLIMASTAR assumes no liability for any equipment that is returned without the previously mentioned MERCHANDISE RETURN AUTHORITY.
- CLIMASTAR and/or its agents have the right to decide whether to replace the system or to repair the damaged components. None of these options will extend the original warranty period.
- Any reparation must be done by the Technical Service and authorized by the manufacturer and/or any of its agents; any manipulation done by unauthorized personal will void this warranty. In case of substitution of the device the buyer must go to the selling centre which will be in charge of receiving the system.
- RESPONSIBILITY LIMITATION: CLIMASTAR as a manufacturer is not responsible for any personal or material damage that directly or indirectly might result of a non proper installation, from an improper handling or neither for the lack of technical qualified staff, nor for the installation costs which are expressly excluded from this warranty.
- None of the present conditions may be extended or modified without the express consent of CLIMASTAR.

CLIMASTAR®

CLIMASTAR GLOBAL COMPANY S.L.

Carretera AS-266 OVIEDO-PORCEYO/ Km.7 Pruvia

33192 - Llanera (Asturias) Spain

Telf: +34 985 66 80 80 / Fax: +34 985 264 751

www.climastar.es



Embalaje y cartón
a reciclar



Deposite el radiador
usado en su
distribuidor o centro
de reciclado



Danos tu opinión

SLIM V2Rev. 30102017